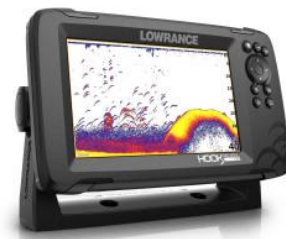




## HOOK REVEAL 7 SPLITSHOT AUS/NZ

POA



## Specifications

### Boat Details

Price	POA	Boat Brand	Lowrance
Model	HOOK REVEAL 7 SPLITSHOT	Length	0.00
Year	2024	Category	Boat Parts and Accessories
Hull Style	Other	Hull Type	Other
Power Type	Other	Stock Number	2-000-15519-001
Condition	New	State	New South Wales
Suburb	MCGRATHS HILL	Engine Make	

### Disclaimer

Our company offers the details of this vessel in good faith but cannot guarantee or warrant the accuracy of this information nor warrant the condition of the vessel. A buyer should instruct his agents and/or surveyors to investigate such details buyer desires validated. This vessel is offered subject to prior sale, price change or withdrawal without notice.

## Description

From the world's best-selling series of fishfinders comes HOOK Reveal, a new fishfinder/chartplotter with one of our most popular features - FishReveal™. This powerful fishfinding tool combines the proven target identification of Lowrance CHIRP sonar with the high-resolution images of bottom detail and structure from DownScan Imaging™. That gives you the ultimate fishing view, allowing you to target fish and get the best view of how they are relating to structure without the need for a CHIRP-DownScan Imaging™ splitscreen display.

Designed to make the most of your time on the water, HOOK Reveal ensures you get the best sonar image every time with Autotuning Sonar, a unique feature that automatically adjusts sonar settings as fishing conditions change. What's more, you'll cover more water in less time with double the sonar coverage of other fishfinders, find fish in deeper water with new transducer options and have an easier time accessing key features with an optimized keypad and simple menu layout.

HOOK Reveal comes with a loaded combination of navigation tools to get you on the fish, including a preloaded Australia and New Zealand coastal chart from C-MAP and C-MAP Genesis Live real-time mapping.

### Features :

- FishReveal™ - See fish light up against picture perfect DownScan™ views of fish-holding structure
  - Genesis Live Real-Time Mapping
  - Autotuning sonar
  - Double the sonar coverage of traditional fishfinders
  - SplitShot transducer with High CHIRP and DownScan Imaging™
  - Splitscreen functionality
  - Preloaded AUS/NZ chart
  - 7-inch SolarMAX™ Display • New fishfinding color palettes
  - Optimized keypad with one-touch access to key features
  - Mapping options include C-MAP, C-MAP Genesis, Navionics® and more
  - microSD card slot
  - Easy front-dash or gimbal-bracket mount
- 

### Disclaimer

Our company offers the details of this vessel in good faith but cannot guarantee or warrant the accuracy of this information nor warrant the condition of the vessel. A buyer should instruct his agents and/or surveyors to investigate such details buyer desires validated. This vessel is offered subject to prior sale, price change or withdrawal without notice.