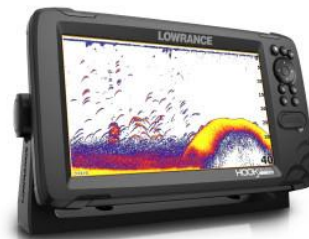
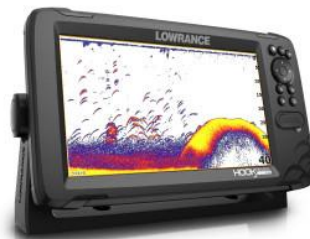




HOOK REVEAL 9 50/200 HDI AUS/NZ

POA



Specifications

Boat Details

| | | | |
|------------|-----------------------------------|--------------|----------------------------|
| Price | POA | Boat Brand | Lowrance |
| Model | HOOK REVEAL 9 50/200 HDI / Length | Category | 0.00 |
| Year | 2024 | Hull Type | Boat Parts and Accessories |
| Hull Style | Other | Stock Number | Other |
| Power Type | Other | State | 2-000-15528-001 |
| Condition | New | Engine Make | New South Wales |
| Suburb | MCGRATHS HILL | | |

Disclaimer

Our company offers the details of this vessel in good faith but cannot guarantee or warrant the accuracy of this information nor warrant the condition of the vessel. A buyer should instruct his agents and/or surveyors to investigate such details buyer desires validated. This vessel is offered subject to prior sale, price change or withdrawal without notice.

Description

From the world's best-selling series of fishfinders comes HOOK Reveal, a new fishfinder/chartplotter with one of our most popular features - FishReveal™. This powerful fishfinding tool combines the proven target identification of Lowrance CHIRP sonar with the high-resolution images of bottom detail and structure from DownScan Imaging™. That gives you the ultimate fishing view, allowing you to target fish and get the best view of how they are relating to structure without the need for a CHIRP-DownScan Imaging™ splitscreen display.

Designed to make the most of your time on the water, HOOK Reveal ensures you get the best sonar image every time with Autotuning Sonar, a unique feature that automatically adjusts sonar settings as fishing conditions change. What's more, you'll cover more water in less time with double the sonar coverage of other fishfinders, find fish in deeper water with new transducer options and have an easier time accessing key features with an optimized keypad and simple menu layout.

HOOK Reveal comes with a loaded combination of navigation tools to get you on the fish, including a preloaded Australia and New Zealand coastal chart from C-MAP and C-MAP Genesis Live real-time mapping.

Features :

- FishReveal™
 - Genesis Live Real-Time Mapping
 - Autotuning sonar
 - 50/200 HDI transducer with Low/High CHIRP and DownScan Imaging™
 - Preloaded AUS/NZ chart
 - SolarMAX™ Display
 - New fish-finding color palettes
 - Optimized keypad with one-touch access to key features
 - Mapping options include C-MAP, C-MAP Genesis, Navionics® and more
 - microSD card slot
 - Easy front-dash or gimbal-bracket mount
 - Improved sonar performance in deep water
-

Disclaimer

Our company offers the details of this vessel in good faith but cannot guarantee or warrant the accuracy of this information nor warrant the condition of the vessel. A buyer should instruct his agents and/or surveyors to investigate such details buyer desires validated. This vessel is offered subject to prior sale, price change or withdrawal without notice.