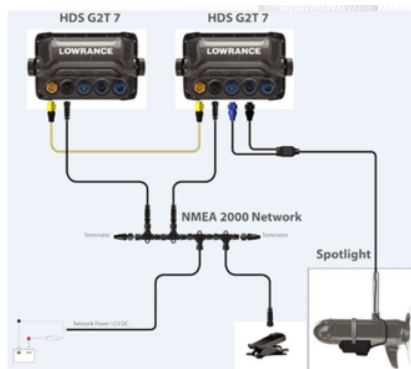




SPOTLIGHT SCAN TROLLING MOTOR XDCR

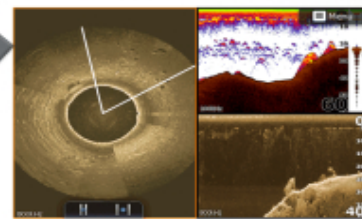
POA



Product Description

The Spotlight Sonar transducer provides every sonar view that anglers need at the bow of the boat-

Spotlight Sonar allows anglers to position the boat for the perfect cast without covering line close and alarming the fish with boat noise.



Broadband Sonar allows anglers to see fish directly beneath the boat and track your bait. A must have for drop shooting or jigging.

DownScan imaging takes all the guess work out of identifying structure below the boat.

Specifications

Boat Details

Price	POA	Boat Brand	Lowrance
Model	SPOTLIGHT SCAN TROLLING	Length	0.00
Year	2024	Category	Boat Parts and Accessories
Hull Style	Other	Hull Type	Other
Power Type	Other	Stock Number	2-000-11303-001
Condition	New	State	New South Wales
Suburb	MCGRATHS HILL	Engine Make	

Disclaimer

Our company offers the details of this vessel in good faith but cannot guarantee or warrant the accuracy of this information nor warrant the condition of the vessel. A buyer should instruct his agents and/or surveyors to investigate such details buyer desires validated. This vessel is offered subject to prior sale, price change or withdrawal without notice.

Description

Key Points -SpotlightScan™ Sonar delivers a new level of angler-controlled, forward- and surround-scanning views to provide picture-like images of key fishing areas on your HDS Gen2 or HDS Gen2 Touch. -The SpotlightScan™ Sonar Transducer connects directly to the sonar and StructureScan HD connectors on the Gen 2 Touch models. -HDS Gen 2 non-touch models require the new SonarHub to be able to view SpotlightScan -A small module is connected to any MotorGuide or MinnKota cable steer foot control pedal to provide the direction the Spotlight is pointing -SpotlightScan allows you to quickly concentrate on the key fishing areas of greatest interest - without wasting valuable fishing time waiting for a full 360-degree scan. -Twin forward-scanning beams provide lightning-fast refresh rates of images, and beam indicators or “spokes” are visible on the HDS Gen2 display to guide adjustments on rotation or scanning speeds for the best possible underwater image. -In addition to forward- and surround-scanning performance, the SpotlightScan transducer also provides DownScan Imaging™ for picture-like images of fish and structure beneath your boat— as well as award-winning Broadband Sounder® technology, which is ideal for marking fish arches and tracking lure action. Connection to HDS Gen2 non-Touch displays requires SonarHub module

Features :

- Surround-scan imaging for your HDS Gen2, Gen2 Touch or Gen3 display
 - Quickly identify key fishing areas before you make the first cast
 - SpotlightScan transducer also features DownScan Imaging and Broadband Sounder for the best possible view beneath your boat
 - Do-it-yourself, bow-mount installation for foot-control, cable-steer trolling motors
 - With SpotlightScan™ Sonar, the angler has complete control - simply by using the remote foot pedal - of the SpotlightScan™ sonar direction and scanning speed - all without having to make additional menu adjustments on the HDS Gen2 display.
 - NMEA 2000® Starter Kit (part number 000-0124-69) required for installation
-

Disclaimer

Our company offers the details of this vessel in good faith but cannot guarantee or warrant the accuracy of this information nor warrant the condition of the vessel. A buyer should instruct his agents and/or surveyors to investigate such details buyer desires validated. This vessel is offered subject to prior sale, price change or withdrawal without notice.